



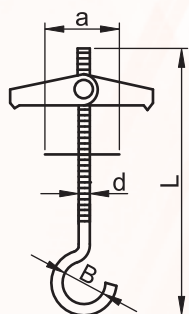
Napínacie a upevňovacie prvky z ocele



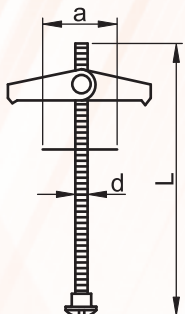
Sklápacie závesy do dutých priestorov

Materiál: oceľ. Povrchová úprava: galvanické kadmiovanie.

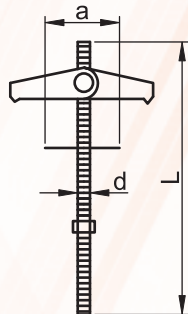
Obj. číslo	d (mm)	L (mm)	a (mm)	B (mm)	Max. zaťažiteľnosť (N)
TMK "C"	M4	95	20	14	200
TMCS skrutka	M4	81	20	-	800
TMM s maticou	M4	100	20	-	800
TMSZ "O"	M4	93	20	14	200



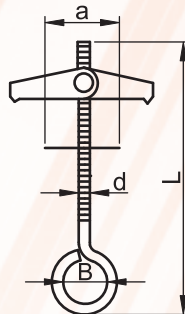
TMK



TMCS



TMM



TMSZ



TMK



TMCS



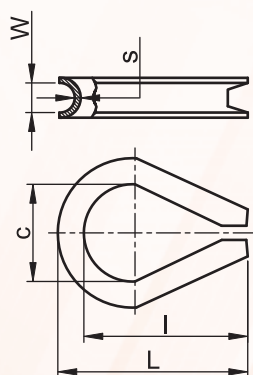
TMM



TMSZ

Lanové očnice

Materiál: oceľ, pozinkovaná.

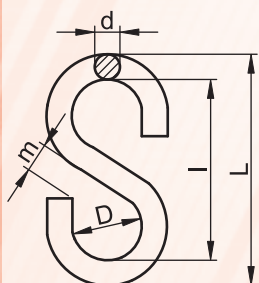


Obj. číslo	W (mm)	I (mm)	L (mm)	C (mm)	s (mm)	Priemer lana (mm)
SZIV-3	7.1	41.6	46.3	17	1	1 - 3
SZIV-4	7.2	37.7	41.7	15	1	3 - 4
SZIV-5	8.7	37.8	42.4	15	1	4 - 5
SZIV-6	9	42.8	47.5	18.1	1	5 - 6
SZIV-8	11.7	47.7	54.5	19.2	1.5	6 - 7
SZIV-10	14.2	53.8	59.7	21.9	1.5	7 - 9
SZIV-12	16.9	62.4	68.5	28.8	1.5	9 - 12
SZIV-16	23.8	75.7	82.9	39.2	2	12 - 14
SZIV-19	26.8	80.6	90.3	42.2	2.3	16 - 19



Háky "S"

Materiál: oceľ, pozinkovaná.



Obj. číslo	d (mm)	L (mm)	I (mm)	m (mm)	D (mm)	Max. zaťažiteľnosť (N)
HR3-25	3	26	20.2	3	7	320
HR3-30	3	31.1	25.5	4.8	8.8	320
HR4-30	4	33.4	25.5	4.8	10	575
HR4-35	4	35.3	27.5	5.2	10.2	575
HR4-40	4	41	33.3	5.9	10.9	575
HR5-45	4.8	46	36.7	6.6	12.5	730
HR5-50	5	53.5	44	10.3	15.3	885
HR6-80	6	80	69	12	24	1250
HR8-100	8	104	88	17	31	2000

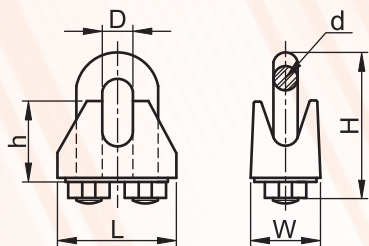




Napínacie a upevňovacie prvky z ocele



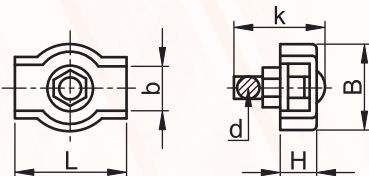
Lanové svorky, profil "U"



Materiál: napínacia skrutka: oceľ, pozinkovaná. Telo svorky: temperovaná zliatina.

Obj. číslo	d (mm)	D (mm)	W (mm)	H (mm)	h (mm)	L (mm)	Priemer lana (mm)
U03	M4	5.4	9.5	20.4	7.3	18	2-3
U05	M5	7.2	9.6	24.2	7.5	21.5	3.2-5
U06	M5	8.0	11.2	24.2	9.5	23.8	4.5-7
U08	M6	9	12.9	35.4	10.4	27.4	6.3-8
U09	M8	10.5	16.6	37.3	12.7	33	8-9
U11	M8	11	18.4	44	16	36.4	10-11
U13	M10	14.8	20.6	54.7	18.7	42.2	12-14
U14	M10	14.9	24.2	55.2	23	43.7	12-14
U16	M10	18.2	26	62	25.2	49.9	14-16
U19	M12	21.5	29.7	76.8	30.2	54.4	16-19
U22	M12	21.5	31	77.8	33.2	56.7	19-22
U25	M14	27.7	32.8	95.7	34.5	63.3	22-25

Lanové svorky jednoskrutkové "simplex"

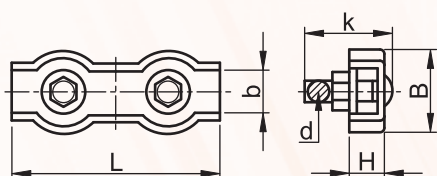


Materiál: oceľ, pozinkovaná.

Obj. číslo	d (mm)	b (mm)	B (mm)	H (mm)	L (mm)	k (mm)
BSZ1-2	M4	5.1	13.6	6.1	17.2	13
BSZ1-3	M4	6.4	15.3	7	18.4	13.6
BSZ1-4	M5	10	16.6	6.5	21	17.4
BSZ1-5	M5	10.4	18.7	8.9	24.4	16.9
BSZ1-6	M6	12.5	23.3	9.6	30.2	21.6
BSZ1-8	M8	18.6	30.4	13.5	36.5	29.2

Skrutky je potrebné dotiahnuť krútiacim momentom predpísaným pre daný typ skrutky.

Lanové svorky dvojskrutkové "duplex"

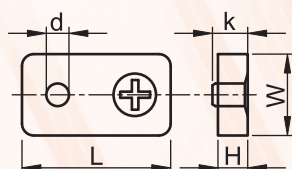


Materiál: oceľ, pozinkovaná.

Obj. číslo	d (mm)	b (mm)	B (mm)	H (mm)	L (mm)	k (mm)
BSZ2-2	M4	5.8	12.9	5	36.6	13.4
BSZ2-3	M4	6.4	15.3	6.7	35.2	13.5
BSZ2-4	M5	8.4	17.5	7.1	40	17.6
BSZ2-5	M5	11.9	20.4	8.8	48.8	19.6
BSZ2-6	M6	12.5	23.3	9.6	60.5	21.6
BSZ2-8	M8	18.6	30.4	13.5	73	29.2

Skrutky je potrebné dotiahnuť krútiacim momentom predpísaným pre daný typ skrutky.

Lanové svorky ploché "AMAX"



Materiál: oceľ, pozinkovaná.

Obj. číslo	d (mm)	W (mm)	H (mm)	L (mm)	k (mm)	Priemer lana (mm)
AMAX3	M3	16.1	10.2	28.6	12.7	3 mm (1/8")
AMAX5	M5	17.5	10.7	30.5	12.4	5 mm (3/16")
AMAX6	M6	22.9	12.9	34.9	15.9	6 mm (1/4")

PRÍSLUŠNÉ NORMY

DIN 6899

PRÍSLUŠNÉ NORMY

DIN 1142

PRÍSLUŠNÉ NORMY

STN 021940

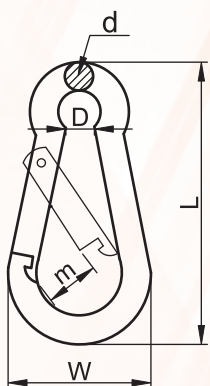


Napínacie a upevňovacie prvky z ocele



Karabíny s pružinou

Materiál: oceľ, pozinkovaná.

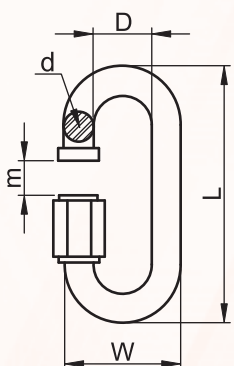


Obj. číslo	d (mm)	D (mm)	W (mm)	L (mm)	m (mm)	Max. zaťažiteľnosť (N)
RKARA4	4.5	5.8	21.1	42.0	5.5	300
RKARA5	5	6.6	26	51.3	7.2	500
RKARA6	6	6.9	30.2	62.3	7.7	800
RKARA7	7	7.8	35.1	70.7	8.7	1100
RKARA8	8	8.1	40.4	80.5	10.2	1400
RKARA9	9	9.7	45	90.3	11.7	1700
RKARA10	10	11.1	47.3	99.8	13.4	2100
RKARA11	11	12.3	57.3	121.2	16.5	2500
RKARA12	12	13.9	63.2	142.5	20.8	2700
RKARA13	13	15.8	72.8	149.4	24.1	3000

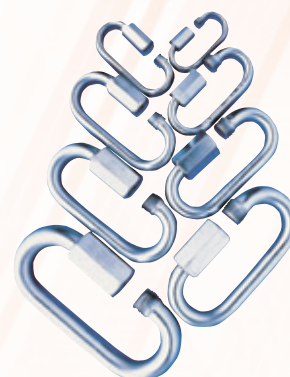


Karabíny so skrutkou

Materiál: oceľ, pozinkovaná.

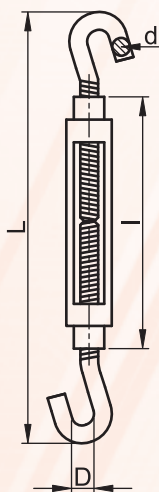


Obj. číslo	d (mm)	D (mm)	W (mm)	L (mm)	m (mm)	Max. zaťažiteľnosť (N)
CSKARA3,5	3.5	10.8	17.9	35.5	12.2	420
CSKARA4	4	11.6	19.7	40.6	13.9	850
CSKARA5	5	13.6	23.5	50.9	17.1	1270
CSKARA6	6	14.7	26.7	58.3	20.3	1700
CSKARA7	7	18.4	32	68.2	22.2	2550
CSKARA8	8	19.6	36	73.8	25.3	3100
CSKARA9	9	20.6	39.2	82.2	27.3	4250
CSKARA10	10	21.6	42.4	89.6	30.5	5100
CSKARA12	12	23.5	48.3	106.2	15.6	6400

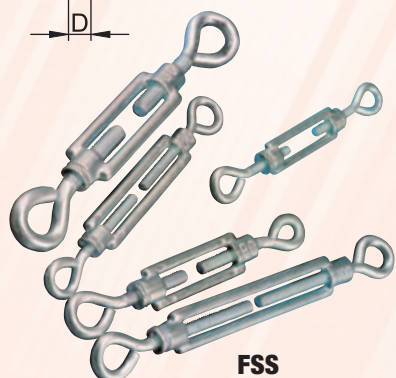


Napínacie skrutky

Skrutka: oceľ, pozinkovaná. Telo: temperovaná zliatina.



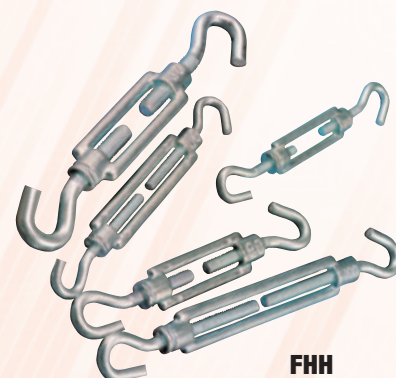
Obj. číslo / Typ skrutky		d (mm)	l (mm)	L (mm)	D (mm)	Max. zaťažiteľnosť (N)	
Oko - oko	Oko - hák						Hák - hák
FSS550	FSH550	FHH550	5	50	92.6	7.8	750
FSS570	FSH570	FHH570	5	70	113	8	770
FSS660	FSH660	FHH660	6	60	112	10	1050
FSS6100	FSH6100	FHH6100	6	100	154	10.2	1800
FSS870	FSH870	FHH870	8	70	137	12.3	1200
FSS8110	FSH8110	FHH8110	8	110	176	12.3	2000
FSS10120	FSH10120	FHH10120	10	120	194	13.3	3000
FSS12130	FSH12130	FHH12130	12	130	224	18.3	4450
FSS16140	FSH16140	FHH16140	16	140	265	22	5950



FSS



FSH



FHH