

60 to 200 MHz**OX 6062****OX 6152****OX 6202**

**A range of laboratory oscilloscopes,
compact multifunction diagnostic tools!**

- **Three complementary tools in one, for record capacity and efficiency: OSCILLOSCOPE; RECORDER-MULTIMETER; FFT ANALYZER.**
- **Sampling speed: 1 Gs/s in Single shot and 50 Gs/s in Repetitive**
- **Memory depth: 2.5 k per channel**
- **2 x 300 V Cat II insulated measurement channels and up to 4 curves on screen**
- **Standard real-time FFT analysis and calculation functions on channels**
- **2 independent 200 kHz, 8,000-count, TRMS digital multimeters**
- **Colour or black & white LCD screen with tactile faceplate**
- **28 direct control keys and Windows-like menus on-screen**
- **Multi-interface communication connector: RS232, USB and Ethernet with WEB server (depending on accessories)**

**OX 6000 oscilloscopes,
streamlined for high performance!**

UNIQUE STREAMLINED DESIGN

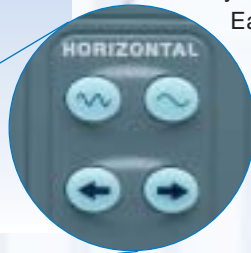
Easy to handle, compact and lightweight, the OX6000 instruments combine the functions of a recorder-multimeter and an FFT analyzer.



DIRECT ACCESS AND INSIGHT NAVIGATION

With **only 28 direct access keys** with different modes and parameters, its ergonomics and its Windows-Like universal menus, available in 5 languages, the oscilloscope is extremely easy to use.

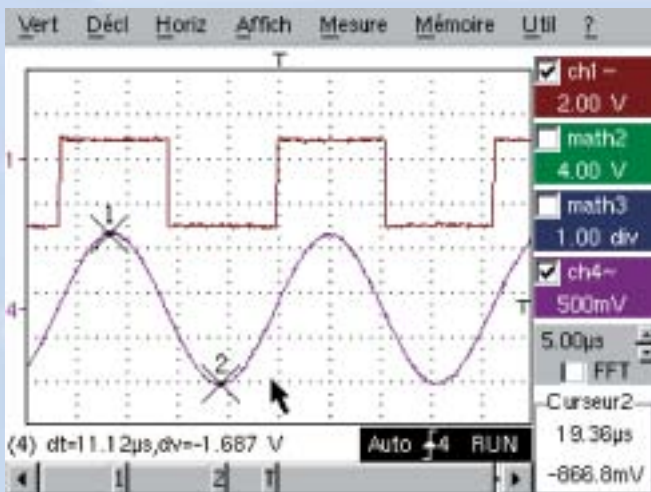
Each of the keys on the front panel enables immediate selection or adjustment (time base, printing ...)



GRAPHICAL SETTINGS

The touch screen and its magnetised stylus also make it possible to access your settings directly on-screen using graphic elements that you can move, such as trace position, trigger level, cursors or zoom.

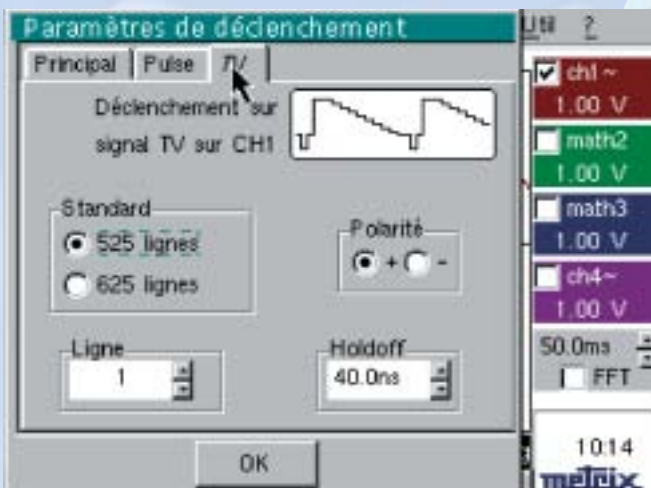
A display zone at the bottom right of the screen constantly displays the current setting, e.g. the value of cursor 2.



SIGNAL ACQUISITION

As far as performance goes, the OX 6000 instruments provide fast sampling and high resolution with their **10-bit / 1 Gs/s converter**, sampling at 50 Gs/s on periodic signals, and 2 ns transient capture, which avoids under-sampling.

- Large input dynamic: 2.5mV to 10 V/div.,
- Advanced activation functions (Pulse, TV, associated signal..), on a single screen.
- Filters: 15 MHz, 1.5MHz and 5kHz, making it possible to adapt to various applications: electrical energy, electrical engineering, automotive, medical, physical measurements, ...



**OX 6000 oscilloscopes,
streamlined for high performance!**

EASILY ACCESSIBLE HIGH PERFORMANCE

ADVANTAGES OF THE 10-BIT CONVERSION

- **Zoom**
The **vertical resolution** of the 10-bit converter, which is **4 times higher than that of a traditional 8-bit converter**, is operated with graphic Winzoom.
- **FFT ANALYZER**
Calculated on **2,500 counts**, the FFT analysis can be adjusted automatically by the Autoset key. The **10-bit conversion** improves the dynamic to 60 dB and provides **optimum accuracy** for frequency and amplitude measurements.
- The 10-bit converter provides also a **4-digit resolution** and unrivalled accuracy.

AUTOMATIC MEASUREMENTS

The **19 automatic measurements** are visualised directly by pressing a key.

For greater reliability and accuracy, a specific measurement zone can be selected by framing with the manual cursors that are accessed via a dedicated key or using the stylus on the touch screen.

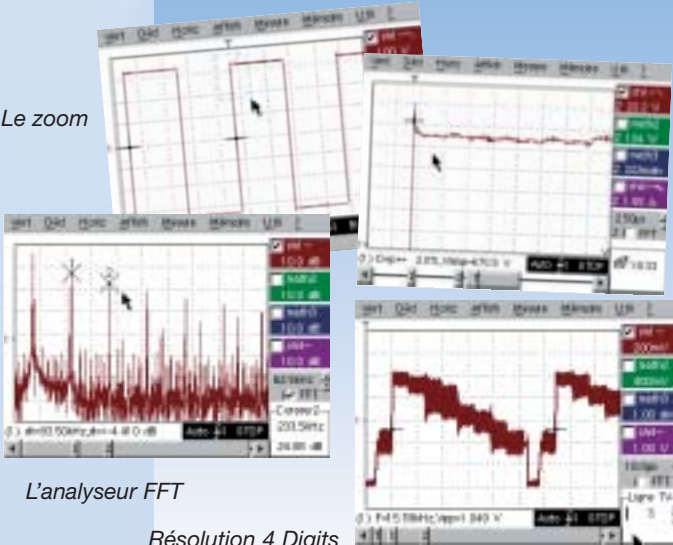
COMMUNICATIONS EXPERT

Thanks to an **Ethernet (10 MB transfer)** interface and a **Web server**, the OX6000 products provide new working tools that are very good value-for-money.

- Printing on **network printers**
- Remote management
- **Exchange of files** on FTP server

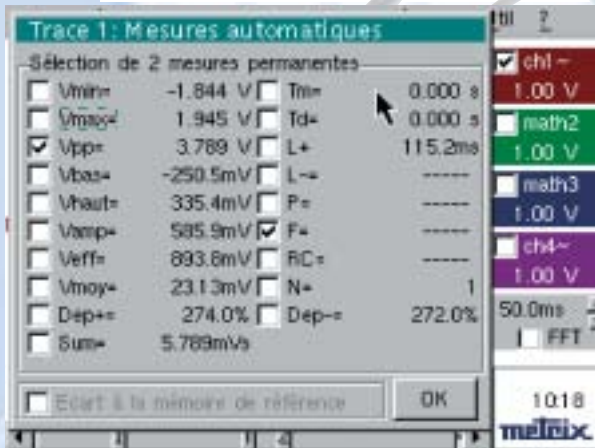
In addition, your instrument can be constantly upgraded by free downloading new functions on the support site.

Le zoom

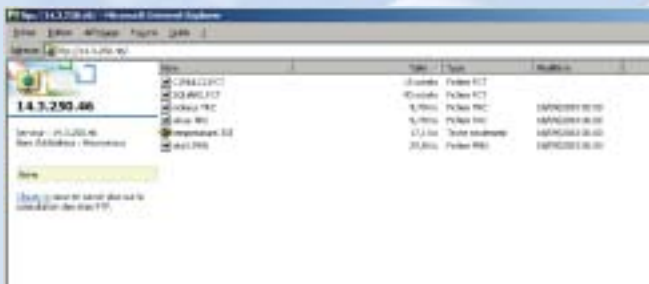


L'analyseur FFT

Résolution 4 Digits



Configuration Ethernet



Serveur Web
et échange de fichier
en ftp

TECHNICAL FEATURES

	OX 6062E-M * / OX 6062E-C	OX 6152E-C	OX 6202E-C*
USER INTERFACE			
Type of display	5" 7 colour or B&W* LCD (115 x 86 mm) - 320 x 240 – CCFL backlighting (adjustable standby)		
Display of curves on-screen	4 curves + 4 references		
Controls	30 direct access controls & shortcuts – 1 M/A key and standby Touch screen - "Windows-like" menus and graphic controls 5 languages, on-line menus & help (English, French, German, Italian and Spanish)		
VERTICAL			
Bandwidth	60 MHz	150 MHz	200 MHz
Number of channels	15 MHz bandwidth limiter, 1.5 MHz or 5 kHz 2 channels - 300 V/CAT II		
Vertical sensitivity	15 2.5 mV-100 V/div calibres (± 2 %)		
Vertical Zoom	One Click Winzoom system (10-bit converter and graphic zoom directly on-screen) - x 16 max		
Probe factors	1/10/100/1,000 or any scale – definition of measurement unit		
HORIZONTAL			
Scanning speed	35 x 1 ns calibres/div et 200 s/div. - 100ms to 200s/div Roll Mode (± 0.1%)		
Horizontal Zoom	One Click Winzoom system (graphic zoom direct on-screen) - x 5 maximum		
ACTIVATION			
Mode	Auto, Normal, Single shot, Auto Level 50%/CH1, CH2, EXT, LINE Front, Pulse width (20 ns-20 s), field TV or line TV, Hold -Off		
DIGITAL MEMORY			
Maximum sampling	10 bits - 50 Gs/s in Repetitive - 1 Gs/s in single shot 2,500 counts per channel GLITCH Mode Duration ≥ 2 ns/Envelope, Averaging (Factors 2 to 64)/ XY Mode		
OTHER FUNCTIONS			
AUTOSET	Complete AUTOSET in less than 5 s, with recognition of channels FFT (Lin or Log scales) - Functions +, -, x/with management of coefficients & units Measurements: 2 or 3 cursors & 19 automatic measurements – 10-bit resolution, 4-digit display		
MULTIMETER (except OX6202E-C)	2 channels – 8,000 counts + min/max bargraph - TRMS – Timestamped graphic recording (5 min to 31 days)		
AC, DC, AC + DC voltage	400.0 mV to 300.0 VRMS or 400.0 VDC - VDC accuracy 0.5%L+5D – bandwidth 200 kHz		
Resistance	80.00 Ω to 32.00 MΩ - accuracy 0.5%L+ 5D – Fast continuity test 10 ms		
Other measurements	Capacities 5.000 nF to 5.000 mF/Frequency 200.0 MHz/Temperature (Pt100)/Diode test 3.3 V		

GENERAL SPECIFICATIONS

	OX 6062E-M * / OX 6062E-C	OX 6152E-C	OX 6202E-C*
Network screen printout (standard), RS232 (standard) or Centronics (optional accessory)	11 B&W or Colour Drivers: IBM Proprinter, Epson ESC/P, Canon HP PCL, Seiko DPU411, Postscript Image Files: ".BMP" approx. 10 KB, ".GIF" approx. 5 KB (storage, RS232 transfer or Ethernet)		
PC Communication	10 MB local Ethernet, RS 232 (maxi 115 kbs) or USB (option) - 10 MB remote Ethernet and web server "Sx-Metro" PC software (optional)		
Mains supply	Adjustable standby 98-264 V multi-voltage / 47-63 Hz / < 15 W - Adjustable cable		
Mechanical features	230 (h) x 185 (l) x 180 (d) mm - 1.4 kg - PF51 Protection		
Guarantee/Origin	3 years/France		

TO ORDER:

OX6062E-M : Digital oscilloscope, 2 x 60 MHz, B&W
 OX6062E-C : Digital oscilloscope, 2 x 60 MHz, Colour
 OX6152E-C : Digital oscilloscope, 2 x 150 MHz, Colour
 OX6202E-C : Digital oscilloscope, 2 x 200 MHz, Colour

Accessories supplied: 2 1/1-1/10 commutable probes, 1 RS232 lead, 1 crossed Ethernet lead, one power cable and 1 instruction manual.



FRANCE
 Chauvin Arnoux
 190, rue Championnet
 75876 PARIS Cedex 18
 Tel: +33 1 44 85 44 85
 Fax: +33 1 46 27 73 89
 info@chauvin-arnoux.fr
 www.chauvin-arnoux.fr

UNITED KINGDOM
 Chauvin Arnoux Ltd
 Waldeck House - Waldeck Road
 MAIDENHEAD SL6 8BR
 Tel: +44 1628 788 888
 Fax: +44 1628 628 099
 info@chauvin-arnoux.co.uk
 www.chauvin-arnoux.co.uk

MIDDLE EAST
 Chauvin Arnoux Middle East
 P.O. BOX 60-154
 1241 2020 JAL EL DIB (Beyrouth)
 Tel: +961 1 890 425
 Fax: +961 1 890 424
 camie@chauvin-arnoux.com
 www.chauvin-arnoux.com

For assistance and ordering

