



Pulse concentrator

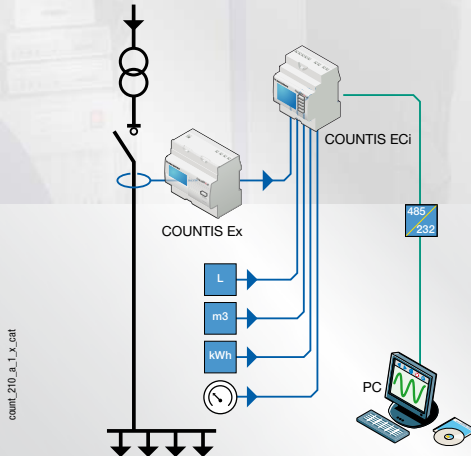
➤ Function

The **COUNTIS ECix** is a multi-fluids pulse concentrator communicating via an RS485 link using JBUS/MODBUS®. Through 7 insulated on/off inputs and 2 analogue inputs (COUNTIS ECi3 version), it counts the number of pulses from different energy meters (water, air, gas, electricity...) and transmits this information to a PC equipped with ENERGY REPORTING software or to a PLC.

➤ Conformity to standards

- IEC 61010-1
- IEC 61000-4-2
- IEC 61000-4-3
- IEC 61000-4-4
- IEC 61000-4-5
- IEC 61000-4-6
- IEC 61000-4-8
- IEC 61000-4-11
- IEC 60068-2-6
- IEC 60068-2-11
- IEC 60068-2-30

➤ Applications



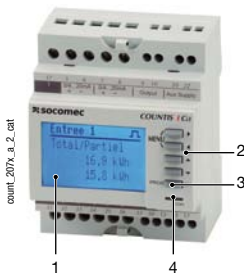
In the knowledge that electricity is not the only energy consumption source, COUNTIS allows centralising of other units such as water, air or gas.

ENERGY REPORTING software, via the **COUNTIS ECix** concentrator and its RS485 link JBUS/MODBUS® protocol, allows centralising all these consumptions whilst guaranteeing an optimal accuracy and ease of exploitation (Windows environment).

The **COUNTIS ECix** provides:

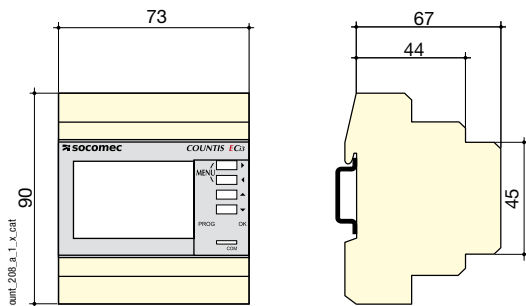
- Easy to use: a wide LCD screen with 4 lines and 5 direct access keys.
- 7 partial, overall, daily, weekly or monthly totalisers to account for the kWh or other type of quantities (liters, cubic meters, Euros...).
- Status of the 7 inputs (to centralize dry contacts information from the installation).
- 2 analogue inputs 0/4 ... 20mA to centralize the analog sensor value (flow, pressure...)
- The 7 logical inputs and the 2 analogue inputs can reconstitute an average value as required over a period of 8, 10, 15, 20 or 30 minutes. Stored in 10-minute segments for 170 days.
- A configurable logical output (configurable alarm, logical equation...)

Front panel



1. Backlit LCD screen.
2. Navigation keys.
3. Validation pushbutton in programming mode.
4. Communication status indicator (COM).

Case



Type	Modular
Number of modules	4
Dimensions W x H x D	73 x 90 x 67 mm
Case protection index	IP20
Front protection rating	IP51
Display type	LCD
Terminal blocks type	Fixed
Rigid cable connection section	1 ... 10 mm ²
Flexible cable connection section	0.5 ... 6 mm ²
Weight	215 g

Characteristics

Auxiliary power supply

Self supplied	no
Alternating voltage	110 / 400 VAC
Direct voltage	120 / 300 VDC
Tolerance	± 10 %
Frequency	45 / 65 Hz
Consumption	5 VA
Insulation voltage	3.5 kV

Communication

Link	RS-485
Type	2 ... 3 half duplex wires
Protocol	JBUS/MODBUS® in RTU mode
JBUS/MODBUS® speed	9600 ... 38400 bauds

On/off inputs

Number	7
Control voltage (integrated)	10 ... 30 VDC
Minimal signal width	10 ms
Maximum signal width	2 s
Minimum length between 2 impulses	30 ms
Edge triggering	rising

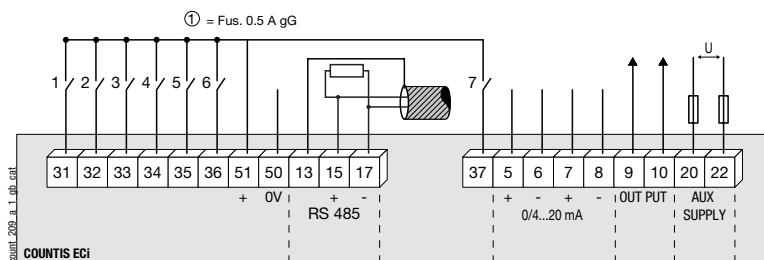
Analog inputs

Number	2
Current	25 mA
Accuracy	0.5 %
Response time	500 ms
Input resistance	200 Ω
Absorbed power	0.1 VA

Operating conditions

Operating temperature	-10 ... +55 °C
Storage temperature	-20 ... +70 °C
Relative humidity	95 %

Terminals and connections



- 31: on/off input n°1.
- 32: on/off input n°2.
- 33: on/off input n°3.
- 34: on/off input n°4.
- 35: on/off input n°5.
- 36: on/off input n°6.
- 37: on/off input n°7.

- 5-6: Analogue input n°1
- 7-8: Analogue input n°2
- 9-10: Output
- 20-22: Power supply
- U=110...400 VAC ± 10%

51-50: Inputs internal/
external power supply

13-15-17: RS 485 link

References

	COUNTIS ECI2	COUNTIS ECI3
Auxiliary power supply U_e	Reference	Reference
230 / 400 VAC	4853 0000	
230 / 400 VAC + 2 analogue inputs		4853 0001
Description of accessories	Reference	Reference
Panel mounting kit	192J 8015	192J 8015