



Single phase - Direct 63 A

➤ Function

The **COUNTIS E1x** is an active electrical energy meter designed for single phase load metering. It is used for direct connections up to 63 A.

➤ Applications

The **COUNTIS E10** displays the total energy consumed and allows remote access through pulse output. Metering over specific period can be managed through a partial counter.

➤ Conformity to standards

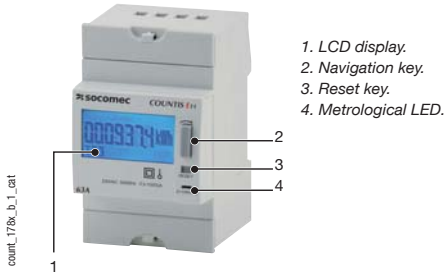
- IEC 62053-21 class 1
- IEC 62053-31
- IEC 62053-11
- EN 50470-1
- EN 50470-3

The **COUNTIS E11** is a double tariff meter meant for dual tariff invoicing. For each tariff a partial counter is available.

The **COUNTIS E12** features MID certification. MID certified meters feature:

- Extra thefts protection : meter can not be reset, sealed casing.
- Extra accuracy : MID specifications on accuracy according to temperature, humidity, and other external factors are extended.

➔ **Front panel**



➔ **Electrical characteristics**

Current measurement

Type	Single phase - Direct 63 A
Input consumption	0.8 VA max.
Startup current (I_{st})	40 mA
Minimum current (I_{min})	0.5 A ⁽¹⁾
Transition current (I_{tr})	1 A ⁽²⁾
Reference current (I_{ref})	10 A ⁽³⁾
Permanent overload (I_{max})	63 A
Short-time over-current	1890 A max for 10 ms

Voltage measurement

Range of measurement	230 ... 400 V +/- 20 %
Consumption (VA)	0.5 VA max.
Sustained overload	280 V phase-neutral

Energy accuracy

Active (according to IEC 62053-21)	Class 1
------------------------------------	---------

Power supply

Self supplied	Yes
Frequency	50/60 Hz

Output (pulsed)

Type of optocoupler	IEC 62053-31 Class A (20 ... 30 VDC)
Number	1
Fixed weight of impulses	100 Wh
Impulse duration	100 ms

Operating conditions

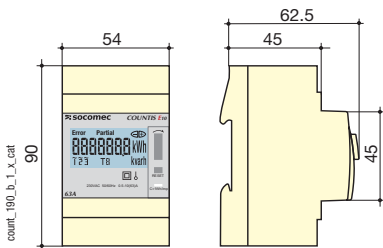
Operating temperature	-10 to 55 °C
Storage temperature	-20 to 70 °C
Relative humidity	85 %

(1) $I_{min} \leq 0.5 \cdot I_r$

(2) The accuracy class is guaranteed between I_r et I_{max} .

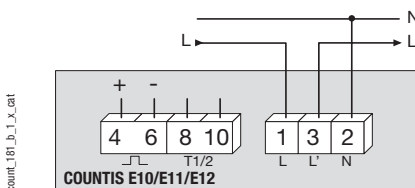
(3) $I_{ref} = I_{(b)}$ (base current) = $10 \cdot I_{(n)}$ for direct connection COUNTIS.

➔ **Case**



Type	Modular
Number of optional modules	3
Dimensions W x H x D	54 x 90 x 62.5 mm
Case protection index	IP 20
Front protection rating	IP 51
Display type	Backlit LCD display
Rigid cable connection section	1.5 to 16 mm ²
Flexible cable connection section	1 to 16 mm ²
Weight	170 g

➔ **Connection**



➔ **References**

Type	COUNTIS E10 Reference	COUNTIS E11 Reference	COUNTIS E12 Reference
63 A direct	4850 3000		
63 A direct - Dual tariff		4850 3001	
63 A direct - Dual tariff and MID			4850 3002

➔ **Certification MID**

The Measuring Instruments Directive (MID) authorises the use of MID Countis in applications for which sub-billing of the electrical energy consumed is necessary (apartments, commercial units, etc.). It guarantees each user that meters meets a high level of accuracy, quality design and manufacturing through a 3rd party verification.

